

Eye Nuts

Eye Nuts

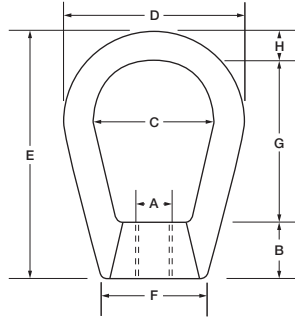
Eye Nuts

- Forged
- 1030 Carbon Steel, Stainless Steel
- Self-Colored, Galvanized* Plated & Electro-Polished
- Quenched & Tempered

Stock No.	*Tap Size A	Bail Size	Thread Length B	I.D. C	O.D. D	Overall Length E	Bell F	I.D. Length G	Ball Thickness H	Shoulder Width I	Rated Capacity (Lbs.)	Approx. Wt. Per 100 Pcs.
16020	3/8	1/2	5/8	1 1/4	1 3/4	2 1/2	1 3/16	1 9/16	3/8	3 1/32	2900	26.0
16021	1/2	1/2	5/8	1 1/4	1 3/4	2 1/2	1 3/16	1 9/16	3/8	3 1/32	3500	31.0
16022	3/8	1	1 1/16	1 1/2	2 1/4	3 3/16	1 3/16	2	1/2	1 3/8	2900	63.0
16023	1/2	1	1 1/16	1 1/2	2 1/4	3 3/16	1 3/16	2	1/2	1 3/8	5200	61.0
16024	5/8	1	1 1/16	1 1/2	2 1/4	3 3/16	1 3/16	2	1/2	1 3/8	5500	59.0
16025	3/4	1	1 1/16	1 1/2	2 1/4	3 3/16	1 3/16	2	1/2	1 3/8	5500	56.0

Ultimate Load is 5 times the Working Load Limit Rating based on standard tap size.

*Additional sizes available. Call for availability. Not recommended for lifting applications.

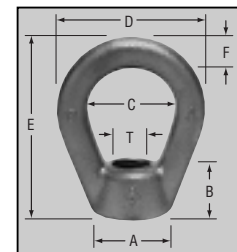


Self-Colored Stock No.	Hot Galvanized Stock No.	Thread Dia. T	A	B	C	D	E	F	Approx. Wt. Per 100 Pcs.	Rated Capacity
16037	16037G	3/8-16	7/8	5/8	1 1/4	2	2 1/2	3/8	22.0	2,700
16050	16050G	1/2-13	7/8	5/8	1 1/4	2	2 1/2	3/8	19.5	2,700
16062	16062G	5/8-11	1 3/8	3/4	1 1/2	2 1/2	3	1/2	60.0	5,000
16075	16075G	3/4-10	1 3/8	3/4	1 1/2	2 1/2	3	1/2	56.0	5,000
16087	16087G	7/8-9	2 1/32	1 11/32	1 5/8	3 3/8	3 31/32	7/8	182.0	10,000
16100	16100G	1-8	2 9/32	1 11/16	1 3/4	3 3/4	4 27/32	1 1/32	280.0	10,000
16125	16125G	1-1/4-7	2 7/8	2	2	4 1/2	5 5/8	1 1/4	625.0	29,400
16150	16150G	1-1/2-6	3 1/8	2 7/32	2 1/2	5 1/4	6 5/8	1 3/8	938.0	35,600

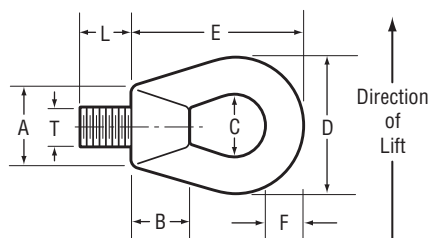
*Zinc plating available, add ZP prefix to part number when ordering.

Eye Nuts

- Forged
- 1030 Carbon Steel
- Self-Colored/ Hot Galvanized*



Stock No.	Thread Dia. T	Thread Length L	A	B	C	D	E	F	Approx. Wt. Per 100 Pcs.	Rated Capacity at 90°
16310	1-8	1 7/8	1 1/16	1 1/16	2 1/4	4	5	7/8	260.0	9,000
16315	1-1/4-7	1 3/4	2 7/8	2	2	4 1/2	5 5/8	1 1/4	640.0	10,000
16320	1-1/2-6	2	3 1/8	2 7/32	2 1/2	5 1/4	6 5/8	1 3/8	900.0	15,000



Designed for 90° lifts

MATERIAL: Eye Nut — Carbon Steel, Alloy Stud — 4340 Alloy Steel

FINISH: Self-Colored

SAFETY FACTOR: 5 to 1.



High-Strength Lifting Eyes Die Lifting Eyes